

# R&D Center

100<sup>+</sup>  
Million

Annual R&D Investment

100<sup>+</sup>

Research Staff

150<sup>+</sup>

Number of patents

## CNAS ACCREDITED LABORATORY



### GREEN LOW-NOISE TRANSFORMER CORE

- Noise Prediction
- Fine Control of Production Process
- Precise Noise Detection
- Targeted Precision Noise Reduction

# Sustainable Development



- UNGC UN GLOBAL COMPACT
- SBTi Near term: Committed
- EcoVadis Sustainability Rating
- ISO 14067-2018
- ISO 14064-1:2018
- BSI PAS 2050:2011

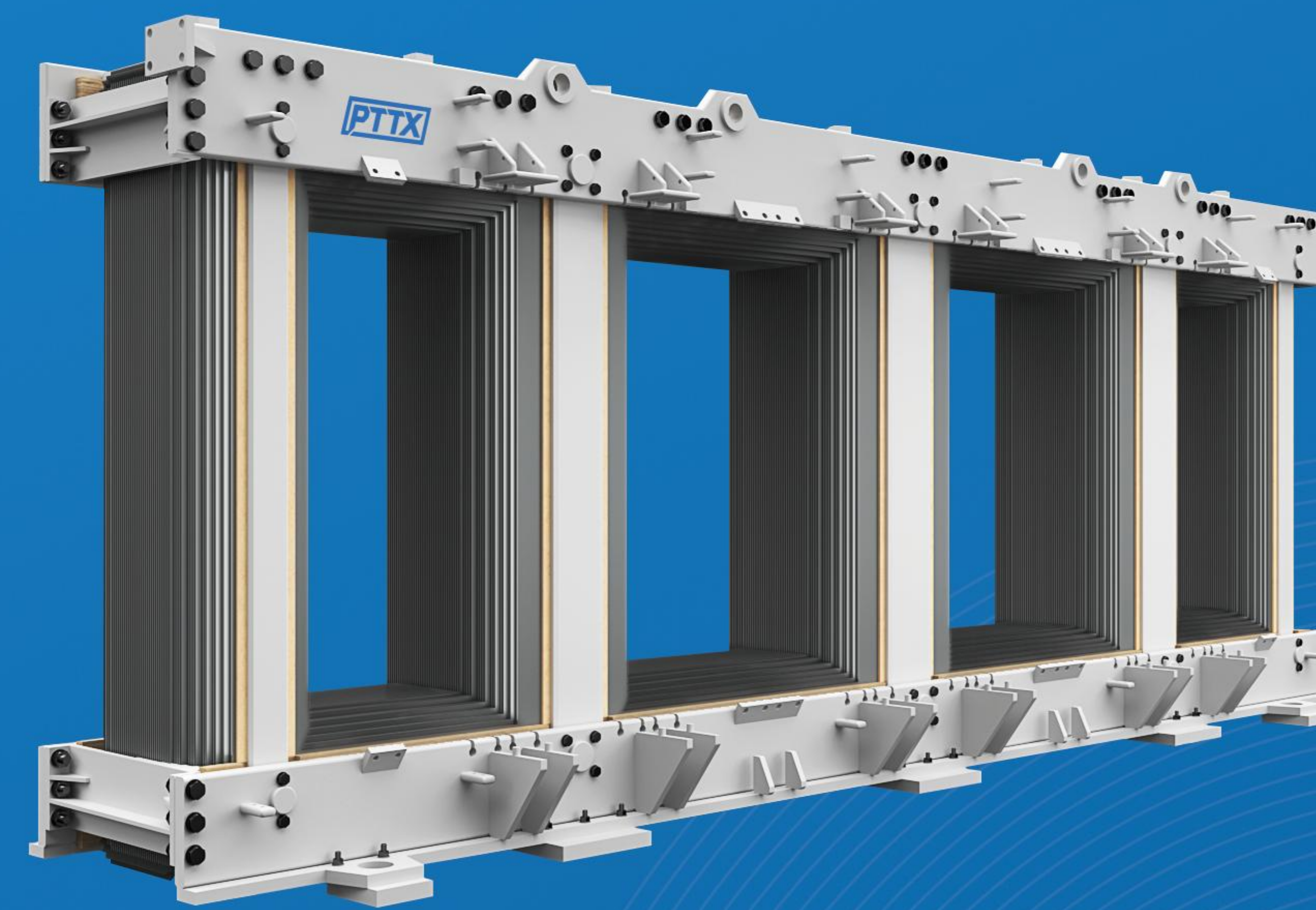


This folding page is printed using environmentally friendly paper and ink



# TRANSFORMER CORE

## WHOLE PROCESS SOLUTION PROVIDER



PTTX



PTTX

Add: No. 19 Jingxiang Rd, Xishan District, Wuxi, China  
Tel: 0510-83795338 E-mail: info@pttx.com  
Web: en.pttx.com

World-Leading Silicon Steel Technology Enterprise

# PTTX

World-Leading Silicon Steel Technology Enterprise

300<sup>+</sup><sub>k</sub>

Tons of annual silicon steel production

300<sup>+</sup>

Global clients and partners

21<sup>+</sup>

Years of focusing on transformer core industry chain

PTTX was founded in 2004 with an enduring commitment to power and energy industry. Focusing on the integrated industrial chain of high-end silicon steel new materials, transformer cores, and smart factory planning, PTTX continues to provide green and low-carbon products and full process solutions for the industrial chain with innovation and technology.

PTTX has become a world-leading enterprise in the field of high-end low-carbon silicon steel and transformer core after years of development, with multiple advanced intelligent manufacturing plants and industry-leading R&D center. Presented in more than 50 countries worldwide, PTTX provides high-quality goods and services to hundreds of global power and energy enterprises, ranging from electrical steel to transformer cores. PTTX has kept at the forefront of industry in terms of output and scale.

## Full-Process Solutions

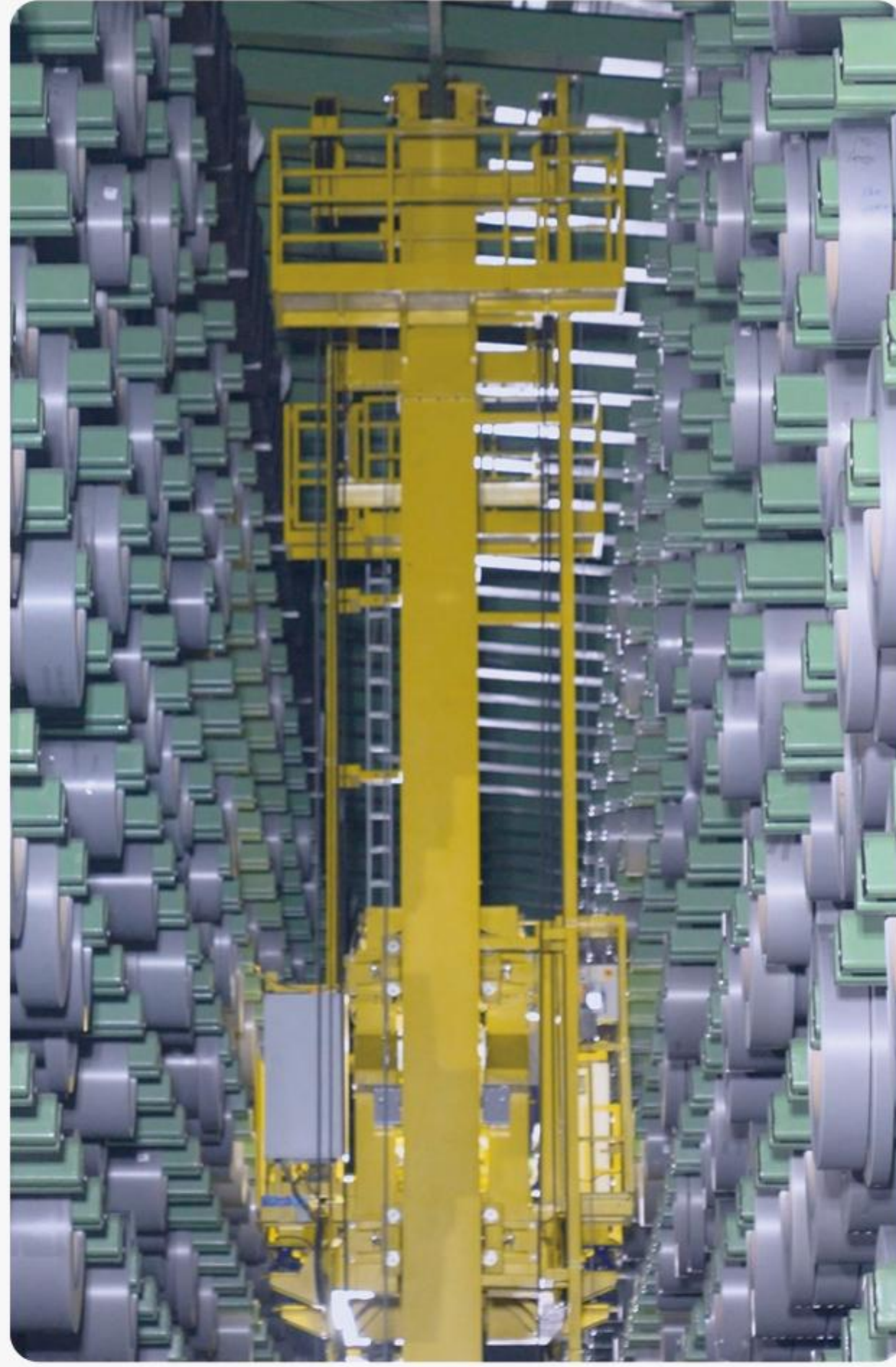


## Our Global Presence

Covering more than 50 countries and regions worldwide



## Transformer Core Production Base (Phase II), Wuxi



**High Bay Storage and Logistics System**

- Automated Smart Warehousing System
- Humidity and Temperature Controlled



**Slitting Lines**

- Online iron loss detection system
- Online Thickness Measurement System



**Cutting To Length Lines**

- Full-Sequence Automated Shearing
- Automated inline e-stacker



Annual Slitting Capacity of Silicon Steel **130,000+T**  
Annual Production Capacity of Transformer Cores **70,000+T**  
Land Area: 40000m<sup>2</sup>



**Silicon Steel Packaging System**

- Fully Automated Packaging
- Contact-Free Packaging

## New Transformer Core Production Base (Phase IV), Wuxi



Annual Slitting Capacity of Silicon Steel **140,000+T**  
Annual Production Capacity of Transformer Cores **80,000+T**  
Land Area: 47000m<sup>2</sup>



**32 Automated Cutting To Length Lines for Silicon Steel**



**Optimized Hybrid Gas Spraying Process**

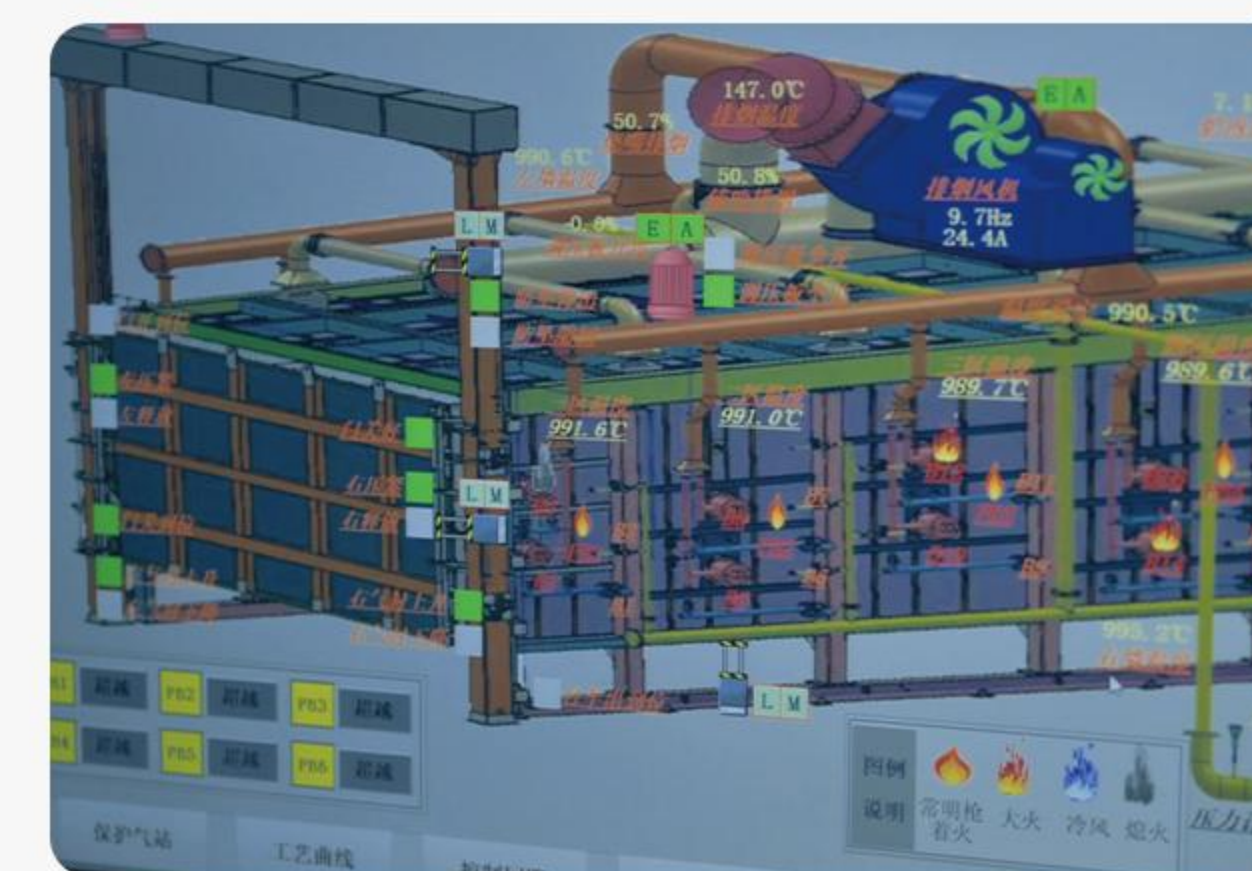
## Silicon Steel Production Base, Anqing



Annual Production Capability **300,000+T**  
Land Area: 130000m<sup>2</sup>



**Pioneering CA and CT production lines**  
**Multi-layer stacked factory design**



**Industry's First Bogie Hearth Furnace System**

**R&D TARGET ≤ 0.6W/kg**

## Performance Indicators of USL Silicon Steel

**MASSIVE PRODUCTION**

**0.61W/kg~0.64W/kg**

**0.65W/kg~0.69W/kg**

**0.70W/kg~0.74W/kg**

**0.75W/kg~0.79W/kg**

**0.80W/kg~0.84W/kg**

## Series Products of USL Silicon Steel

**Master Coils**  
Coils without slitting

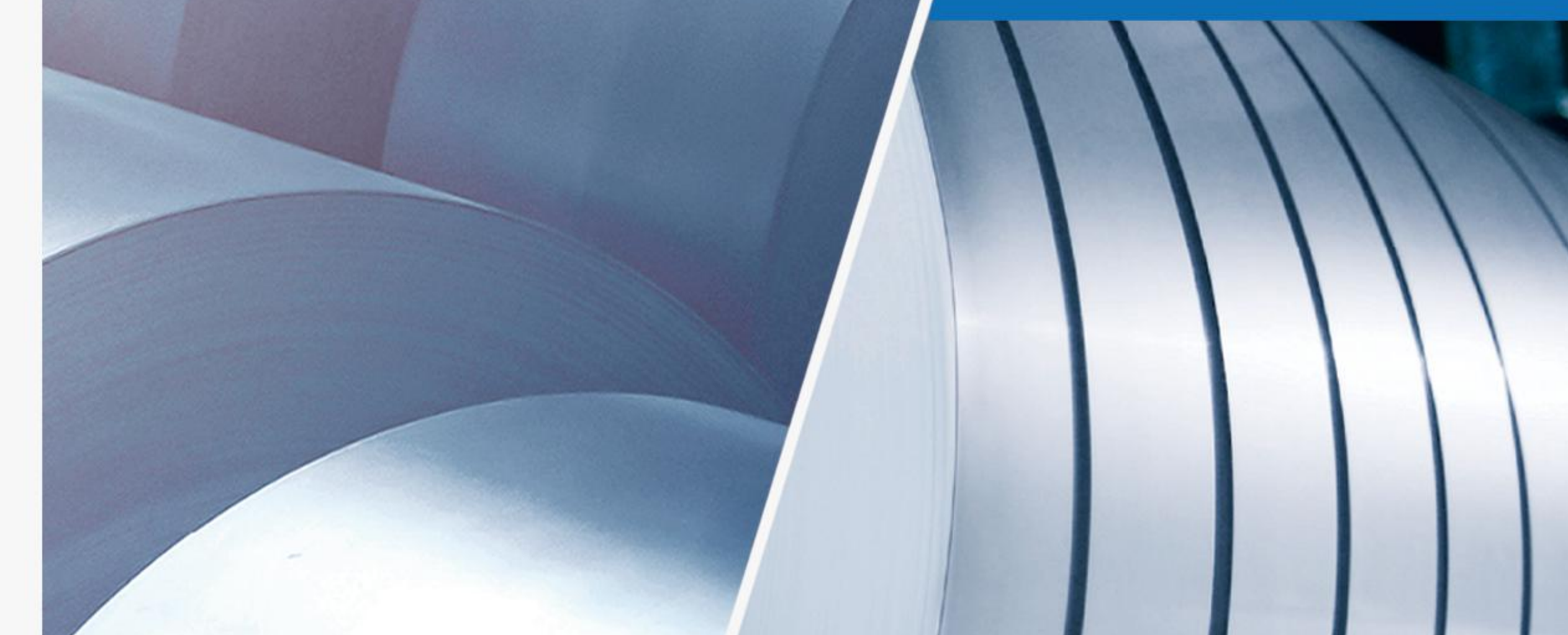


Max Weight per Coil: ≤22(T)

Max Weight Per Pallet: ≤5(T)

**Slit Coils**

Width: < 800mm  
(Customer specified width)



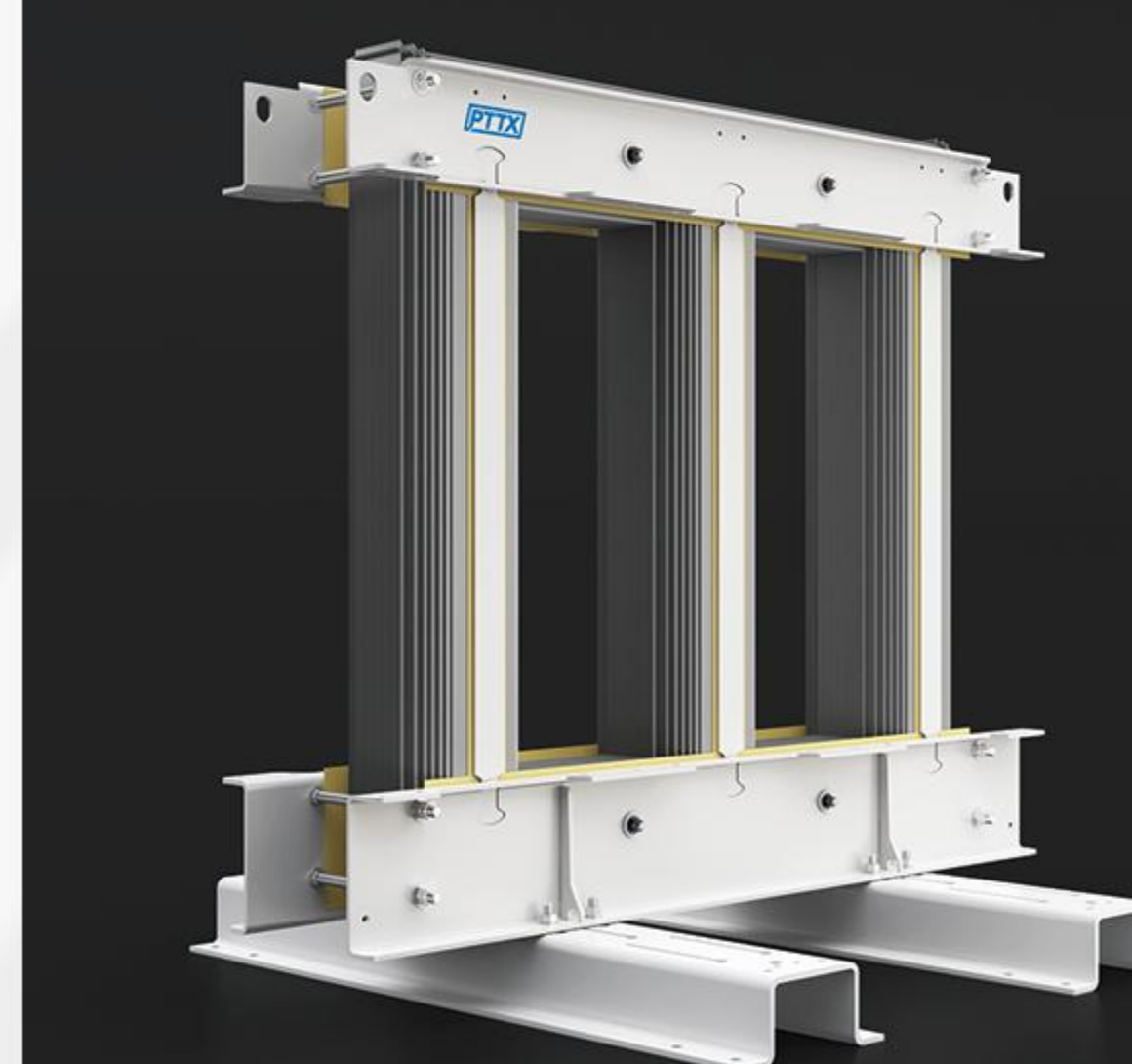
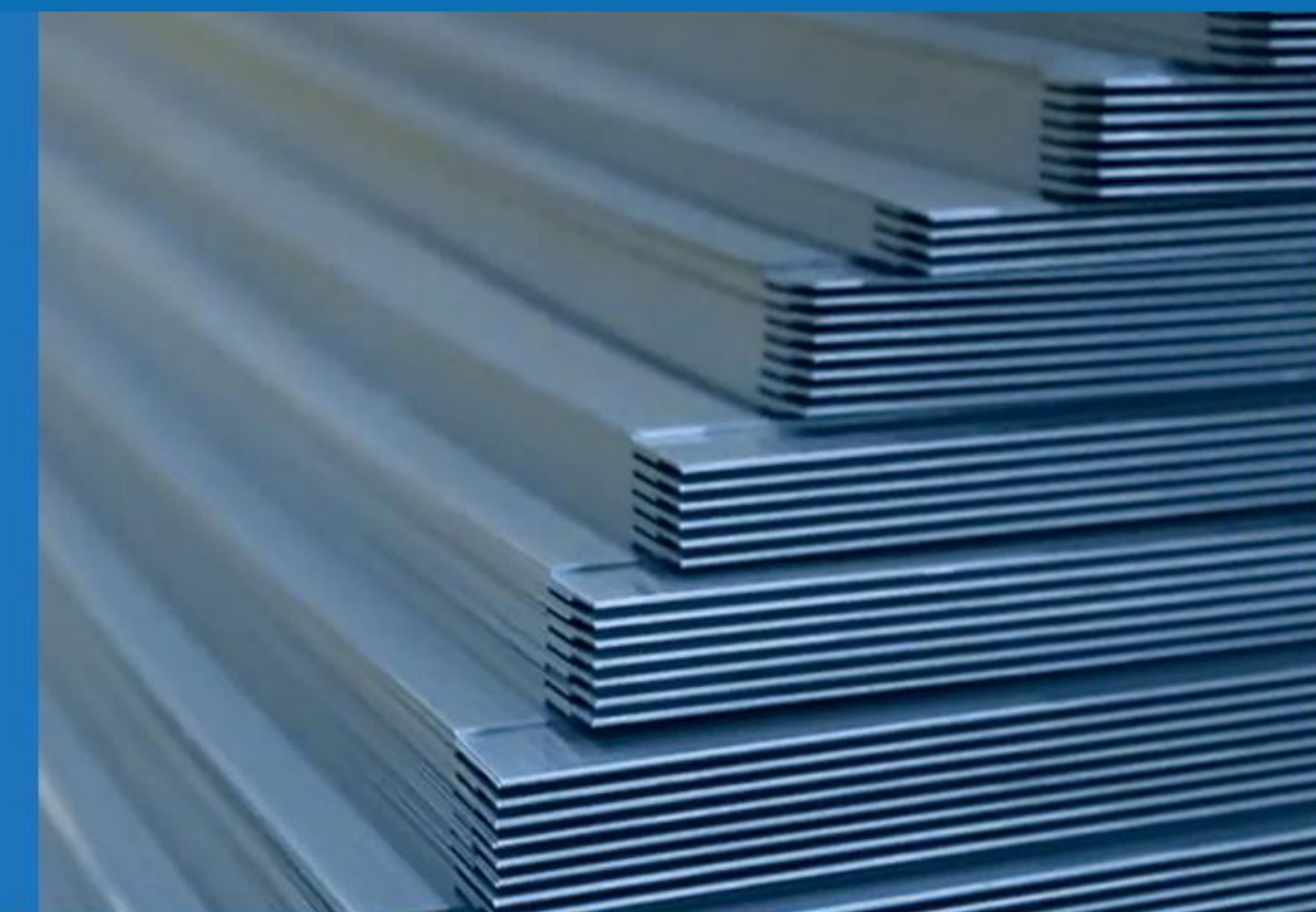
**Mother Coils**  
Width: 800-1250mm

Max Weight Per Pallet: ≤5(T)

## Series Products of Transformer Cores

**Cut Laminations**  
Voltage Class: 10kV~1100kV

Sheet Width : 80-1000 mm  
Sheet Length ≤ 6000 mm  
Max Weight Per Pallet ≤ 10T



**Fully Assembled Cores**  
Full Range of Distribution and Power Transformers

T≤315kVA  
315kVA < T≤6,300kVA  
6,300kVA < T≤120,000kVA  
T > 120,000kVA

**Unicore**  
New High-Efficiency Open Mitred Unicore

Single Phase Unicore  
Three Phase Unicore  
Other types: Double/Single Openings, V-Type/Z-Type Joints

